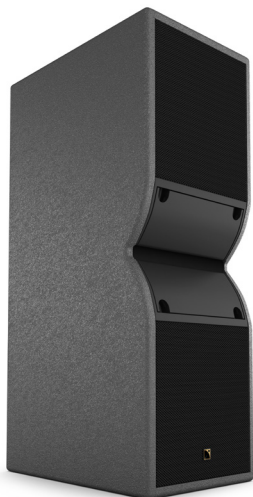


KARA Ili LONG THROW LINE SOURCE FOR INSTALL



Kara Ili is the installation version of the Kara II, designed for long-throw installation applications. Kara Ili shares identical sonic performance with its touring counterpart but features a sleeker design and streamlined mounting hardware fitting integration requirements.

With class-leading SPL per weight and footprint, Kara Ili is ideal for venues that require clarity and long throw capability such as performing arts centers, theaters, operas, houses of worship, corporate facilities and exhibition centers.

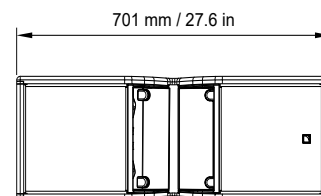
Inter-element angles and Panflex™ for user-adjustable horizontal directivity enable integrators, consultants and sound designers to precisely tailor the array coverage to any audience geometry.

Kara Ili is a discreet yet powerful solution featuring a range of accessories dedicated to installations. Kara Ili is highly weather-resistant as standard and can be color-matched to melt into any venue decor, indoor or outdoor.

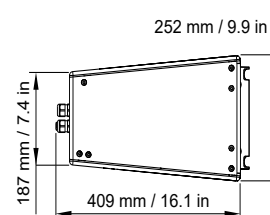


SPECIFICATIONS

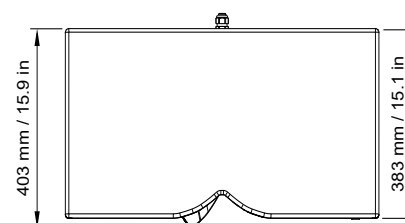
Description	2-way active WST enclosure amplified by LA2Xi / LA4X / LA8 / LA12X
Usable bandwidth (-10 dB)	55 Hz - 20 kHz ([KARA II 70])
Maximum SPL^{1,2}	142 dB ([KARA II 70])
Nominal directivity (-6 dB)	Vertical : depending on number of elements and array curvature Horizontal : 70° / 110° symmetric or 90° asymmetric
Transducers	LF: 2 x 8" neodymium cone driver HF: 1 x 3" neodymium diaphragm compression driver
Acoustical load	LF: Bass-reflex HF: DOOSC waveguide, Panflex
Nominal impedance	LF: 8 Ω HF: 8 Ω
Connectors	Two 4-point terminal blocks with push-in connection Connector sealing plate with cable gland
Rigging and handling	External rigging kits M6 inserts for rigging plates and accessories Inter-enclosure angles [deg]: 0, 1, 2, 3, 4, 5, 7.5, 10
Weight (net)	21 kg / 46 lb
Cabinet	Premium grade Baltic birch plywood
Front	Coated steel grill Acoustically neutral 3D fabric
Rigging components	High grade steel with anti-corrosion coating
Finish	Dark grey brown Pantone 426 C Pure white RAL 9010 Custom RAL code on special order
IP	IP55



Front



Side



Top

¹ - Peak level at 1 m under free field conditions using pink noise with crest factor 4 (preset specified in brackets).

² For Max SPL values using LA2Xi, refer to LA2Xi system specification sheet.